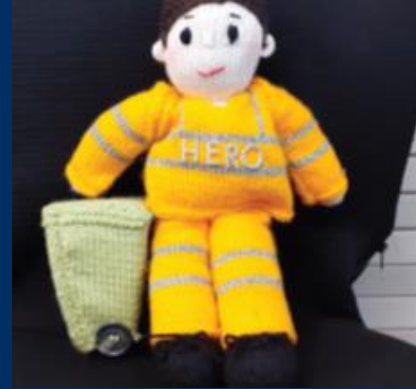


Resources & Waste Management in County Durham

A Strategic Overview & Update

Neighbourhoods and Climate Change
24th July, 2024



This is your recycling bin

<p>Yes please</p> <ul style="list-style-type: none"> Paper and cardboard Cartons, cans, aerosols and foil Plastic pots, tubs, trays and bottles Recycle glass bottles and jars in your kerbside box <p>Recycling Bin</p>	<p>No thanks</p> <ul style="list-style-type: none"> Black bags Food waste Pizza boxes Pet waste Nappies Batteries Bedding/textiles Polystyrene Electrical items Crisp packets Plastic bags/ready meal film
--	--

✓ Clean, dry and loose ✓ Thank you for recycling

For more information about reuse and recycling visit:
www.durham.gov.uk/whatgoeswhere and www.durham.gov.uk/reducereuseandrecycle



Why does recycling matter?

For every item we recycle, we are reducing the need to use raw materials, which helps save energy and precious resources. It only takes a quarter of the energy to make a plastic bottle from recycled plastic as from new materials.

Metal and glass packaging can be recycled endlessly, without loss of quality. Imagine how much energy you could save!

Every tin recycled saves enough energy to heat a TV for 4 hours!

Recycling is a circular process. All materials are recycled and used to produce new products. The new materials are used to make products that we use every day. This means that the materials are not lost, but are used over and over again.

Recycling also helps to reduce the amount of waste that ends up in landfill.

Household waste recycling centres
Please take any other recyclable items, which are not collected at the kerbside, to a household waste recycling centre. Visit www.durham.gov.uk/hwrc to find your nearest centre and what you can recycle and dispose of there.

Recycling Matters

Where do the things you recycle end up?

- Here, (metal can)
- here (plastic bottle)
- and here! (glass bottle)



Presentation Outline



- Big picture to County Durham
- Performance update
- Reduction and reuse
- Recycling and composting
- Waste treatment
- Legislation update – Simpler Recycling
- Now and the next decade



Big Picture: A Circular Economy



Big picture: County Durham Operations

Resources & Contracts

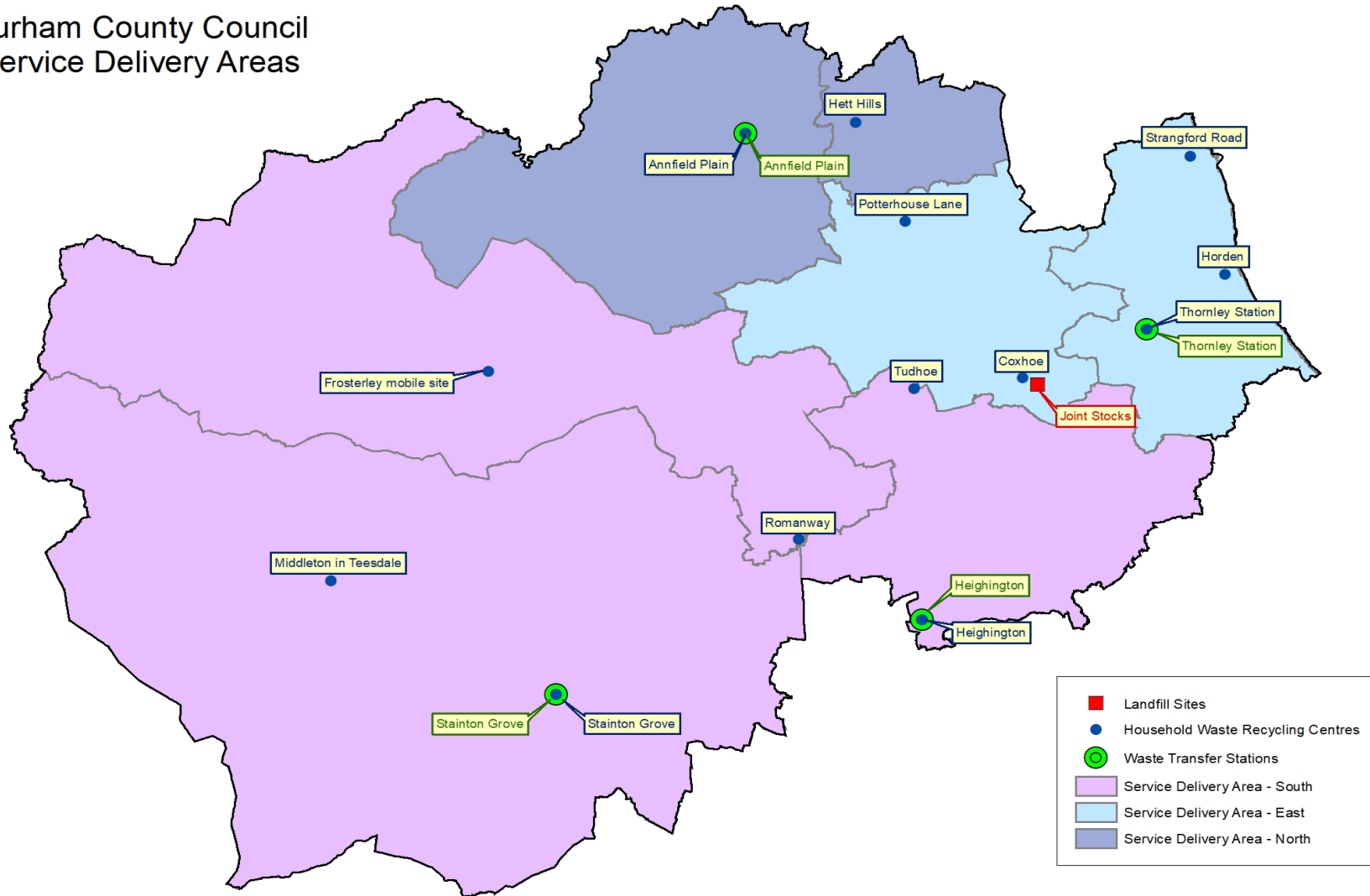
- More than 300 frontline and office staff
- 86 Front line refuse & recycling vehicles
- 12 Household Waste Recycling Centres and 1 mobile HWRC at Frosterley (DCC owned Martins contract)
- 4 Waste Transfer Stations
- 1 composting facility
- Energy from Waste (EFW) contract with Suez
- Material Recycling Facility (MRF) with BIFFA
- Haulage contract (Suez / Hargreaves)



Productivity

- 2022/23, County Durham households generated 251,114 tonnes of household waste
- 37.1 % reuse, recycling and composting (2022/23)
- 249,736 bins to be collected every week 99.86% successful per quarter (Alternate Weekly Collection (AWC) scheme)
- Over 2,000 bulky collections carried out every year
- Over 68,000 garden waste subscriptions.

Durham County Council Service Delivery Areas



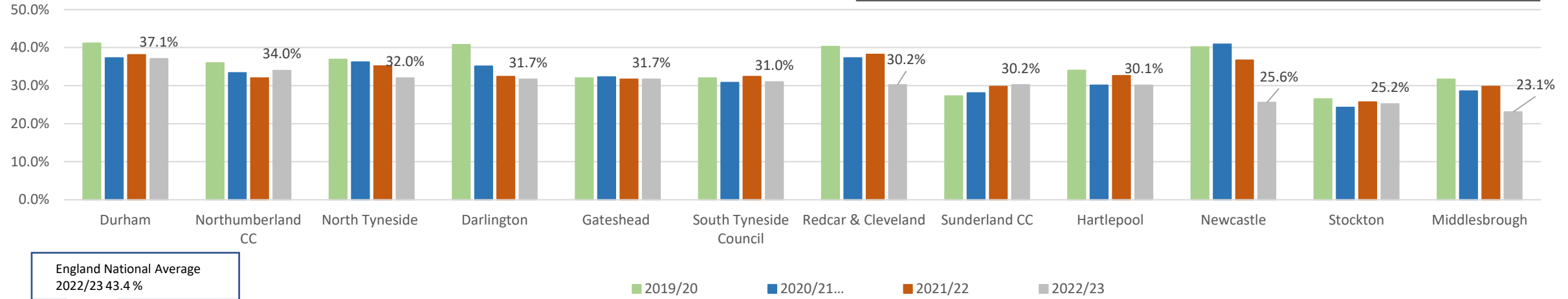
Performance Update (& Covid-19 Impacts)

	2019/20	2020/21 (COVID)	% Change	2021/22	% Change	2022/23	% Change
Household Re-use, Recycling & Composting Rate	41.2%	37.3%	-3.90%	38.1%	+0.80%	37.1%	-1%
*Municipal Waste sent to Landfill	2.2%	8.2%	+6.0%	10.6%	+2.4%	9.6%	-1%
*Municipal Waste (tonnes)	252,017	266,698	+5.8%	272,484	+2.16%	252,114	-7.5%
Kerbside Residual Waste (tonnes)	108,950	122,657	+13%	119,265	-2.77%	113,337	-5%
Kerbside Garden Waste Collections (tonnes)	15,399	16,574	+7.6%	17,368	+4.80%	14,882	-14%
Kerbside Recycling Collections (tonnes)	45,729	50,668	+10.8%	49,039	-3.21%	45,640	-7%

*Municipal Waste includes household and business waste

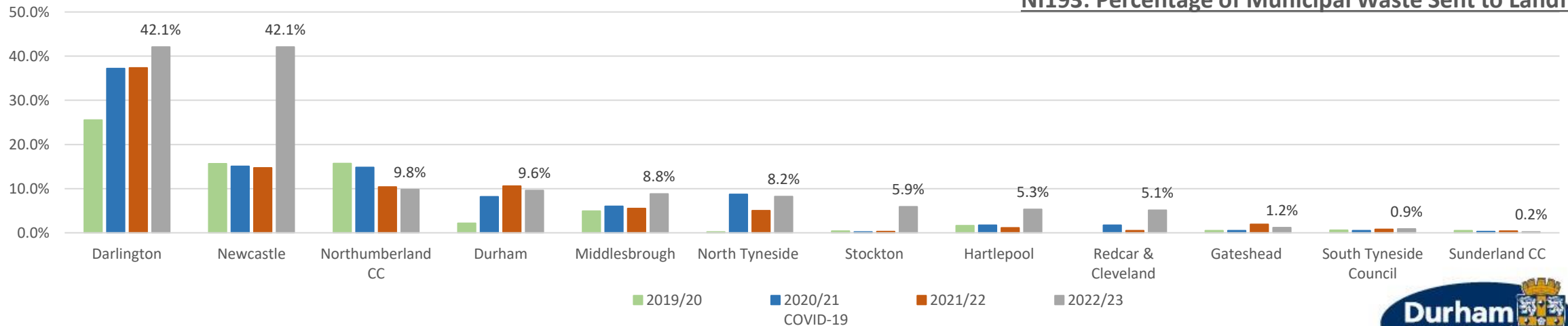
NE Performance

NI192: Percentage HH waste sent for Reuse, Recycling & Composting



***Reuse, recycling and composting rate in England**
2019/20 – 45.5%, 2020/21 – 41.4% , 2021/22 – 44.1%, 2022/23 – 43.4%

NI193: Percentage of Municipal Waste Sent to Landfill



Waste Reduction Campaigns

Love Food Hate Waste



Smart Shopping



Junk Mail



Real Nappies



Single Use Plastics



Home Composting



Christmas

Home > Residents > Rubbish & Recycling > Reduce, Reuse, Recycle > Reduce your waste at Christmas and Recycle

Reduce your waste at Christmas and Recycle

Below are our top Christmas recycling tips to help you reduce your impact on the environment as well as your waste. Find out what to do with old batteries, Christmas trees and wrapping paper. Over the festive period, 33% more glass bottles and jars, food and drink cans, paper and cardboard will be thrown away.

Christmas shopping

- Take reusable shopping bags or carrier bags with you.
- Buy gifts made from recycled materials or with minimal packaging.
- Buy wrapping paper and cards which can be recycled. Plain card and envelopes, glass or aluminium can be recycled if in an airtight paper, remember this scratchy stuff if it's scratched, it can be recycled. Ribbon, sticky tape and decorations aren't recycled. If wrapping paper can't be recycled.
- If you're buying electrical goods, check if the retailer has a 'take back' service to recycle anything which you may be replacing.
- Buy from green business for electrical goods and toys.
- Get rid of wrapping and wrapping paper altogether.
 - Cut it up after using gift tags into a few strips as animal feed.
 - Cut it up gift recipients - say festive tickets, drop out, when buying.
 - Recycle as a Christmas card.
 - Use a reusable gift bag.

Christmas trees

- Use an artificial tree.
- If you purchase a real tree, source it from a sustainable grower and make sure it has FSC (Forest Stewardship Council) certification.
- Recycle as much of household waste wrapping, tinsel.

Festive food

- Plan your Christmas meals ahead.
- Make a shopping list and sort out your freezer before going to your food shop.

Single Use Plastic Project Update

- Significant progress reducing SUPs across County Durham pre pandemic, picking momentum back up.
- Dedicated task group established (internal & external partners). Meet quarterly.
- Dedicated action plan.
- Website content available www.durham.gov.uk/singleuseplastics
- Bespoke pledge over 300 individuals, organisations and community groups across County Durham signed up.
- National and local publicity and awards!
- Sharing best practice (internally and externally) on catering alternatives, procurement, waste management, Education, Leisure Services, communications etc.
- National legislation is helping the agenda!



Encouraging Reuse

Green Move Out



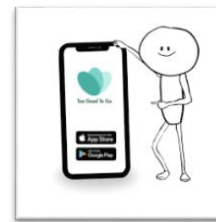
Furniture reuse schemes



Re-Usable Containers



Water Refill Scheme



Community Fridge and Food Apps

Stainton Grove Reuse Shop



Plastic Roads

Recycling - More but of the right stuff



In your recycling bin, do not bag items in plastic black bags, liners or carrier bags.

Please place all items **loose** into your recycling bin. We must be able to see that the contents of your bin can be collected for recycling.

Extra recycling can be placed in a clear plastic bag next to your recycling bin.

Bin it right

A guide to what you can put in your recycling bin and box

- Recycling Bin (Blue):** Plastic pots, tubs, trays and bottles; Cartons, cans, aerosols and foil; Paper and cardboard.
- Recycling Box (Green):** Glass bottles and jars.

Wash and squash plastic bottles and replace lids (except pumps). Metal only lids and caps can also be recycled in your bin. Place all clean, dry items loose in to your bin. Do not bag!

No Thanks: Please do not put any of these items in your recycling bin or box:

- X Black bags / liners / black plastic
- X Carrier bags / bags for life
- X Food
- X Nappies
- X Clothes / shoes / textiles
- X Plastic bags / wrapping / film
- X Crisp packets / sweet and biscuit wrappers
- X Kitchen roll / tissues / wipes
- X Scrap metal / wood / electricals
- X Batteries / Light bulbs
- X Polystyrene / bubble wrap

Why does recycling matter?

For every item we recycle, we are reducing the need to use raw materials, which helps save energy and precious resources. It only takes a quarter of the energy to make a plastic bottle from recycled plastic as from new materials.

Metal and glass packaging can be recycled endlessly, without loss of quality. Imagine how much energy you could save!



Household waste recycling centres
Please take any other recyclable items, which are not collected at the kerbside, to a household waste recycling centre. Visit www.durham.gov.uk/hwrc to find your nearest centre and what you can recycle and dispose of there.

03000 36 0000
wasteware@durham.gov.uk
www.durham.gov.uk/recycling
Recycle for County Durham
#RecyclingMatters #BinItRight

In Partnership With
Metal Matters

Don't delay -
recycle today!

recycle
for County Durham



Recycling Matters

Where do the things you recycle end up?



Switch on to small electrical recycling and give them a chance to become something new!

Visit www.durham.gov.uk/WEEE
Recycle for County Durham

recycle
for County Durham

In partnership with Volpak, AO.com and County Durham Furniture Help Scheme



The challenge of contamination

The main contaminants found in recycling bins, in County Durham are:

- **Black bags**
- **Pet waste**
- **Nappies**
- **Food waste**
- **Textiles**



Issues:

Black Bags – items placed in black bags can't be recycled because the collection crews can't see what it is in the bag and it could contain contaminated recycling/ waste. Black bags can not be recycled easily.

Mixed plastics including polystyrene – markets for plastics other than bottles, pots, tubs and trays are limited (e.g. films such as bread bags).

Textiles – cannot be processed at the sorting plant and can damage the sorting equipment.

Countywide Contamination Campaigns

- Social media activity (Facebook, Twitter).
- Updated website content. Dedicated videos.
- Produced a dedicated video showing 'what goes where' & Plastic Matters (externally funded £100k)
- Local press.
- Further community engagement activity – door knocking, educational visits, roadshows (please contact the Waste Strategy Team to get booked in! – contact wasteaware@durham.gov.uk)
- Carried out 7,715 educational visits to properties with contaminated recycling bins across 2023/2024
- Contamination levels fell by 3% in 2023/24, down to the lowest contamination level DCC has had post Covid-19 pandemic (32.8%).
- Delivering more awareness messaging and communications during 2023/2024.



www.durhamrecycles.co.uk

www.durham.gov.uk/whatgoeswhere



Waste Electronic & Electrical Equipment (WEEE) Project

- WEEE Project has received further external funding for 2024 (100K).
- Allows DCC access to Material Focus advertising & comms including HypnoCat.
- Now involves 158 WEEE collection points and 52 vape collection points spread across the county.
- The project has collected and recycled 43,650Kg of small electricals to date alongside 300Kg of vapes (which only launched in autumn 2023).
- WEEE scheme continues to grow and collected 5,250Kg more electricals in 23/24 (17,960Kg) than in 22/23 (12,710Kg).
- Won a National Recycling Award in 2022.
- Shortlisted at 2024 MJ Awards.

A blue promotional poster for WEEE recycling. At the top, it says "HUMANS OF COUNTY DURHAM". The main headline is "Don't bin them, recycle your old electricals" in large, bold, pink and white text. Below this, it says "Anything with a plug, battery or cable can be recycled and turned into something new." and "Gather up your electricals and drop them off at your local recycling point. Visit www.durham.gov.uk/weee to find your local drop-off points." It also mentions a monthly recycling competition. The poster features a pink cat sitting on a recycling bin, surrounded by various electrical items like a shaver, a power drill, and headphones. There is a QR code and logos for "recycle your electricals" and "Durham County Council".

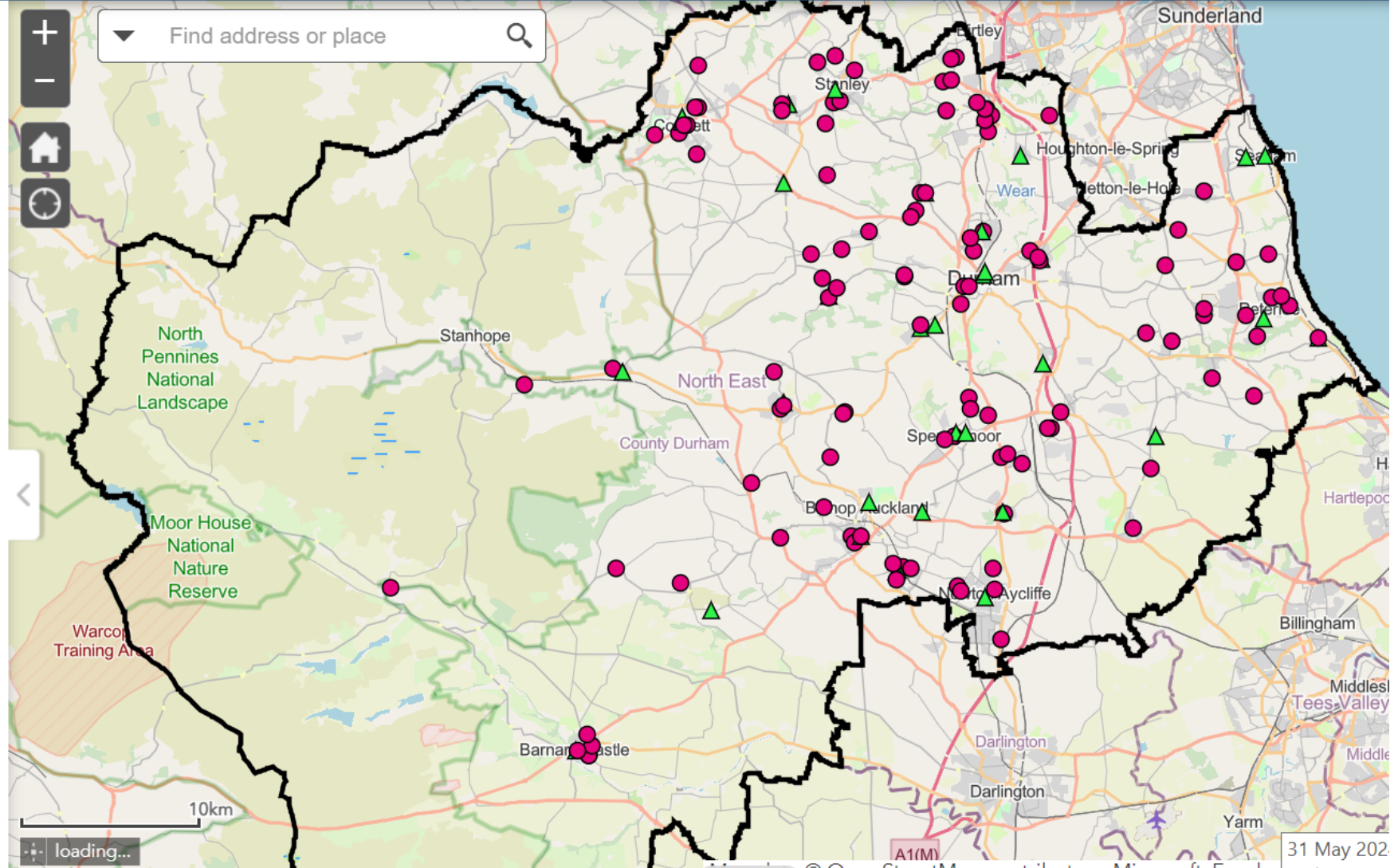


Waste Electrical and Electronic Equipment (WEEE) recycling collection points

Waste Electrical and Electronic Equipment (WEEE) Recycling Collection Points

- WEEE Recycling only
- ▲ WEEE Recycling with E-cigarette collection

County Durham Boundary



Repair Café

- The WEEE Project also runs a repair café in collaboration with County Durham Furniture Help Scheme.
- DCC's touring repair café has hosted 44 events repairing 431 items, saving the equivalent of 10,344 Kg of CO2 emissions.
- This has expanded into offering PAT test training to increase social value and enable volunteers to set up their own repair cafés.
- DCC now supports 3 permanent volunteer led Repair Cafes in County Durham and is in talks to set up two more.

Permanent Repair Cafés

There are several volunteer run repair cafés in County Durham. Repair Cafés are free meeting places and they are all about fixing things together. Visitors bring their broken items from home, then together with 'fixers' they make their repairs in the Repair Café. It's a fantastic way to help the environment, prevent waste, save money and learn new skills. Current Permanent Repair Cafés in County Durham are:

- Friendly Fixers Repair Café - Fishburn Youth and Community Centre (TS21 4ED) - First Saturday of the month from 10.30 am to 12.30 pm
- Seaham Repair Café - St John's Church Hall, Seaham (SR7 7SA) - Second Saturday of the month from 12.00pm to 4.00pm
- Merryoaks Repair Cafe - Merryoaks Community Hall, Park House Road, Durham, (DH1 3QF)- generally occurs every table top sale- contact the venue to for more information.



Single Use Vapes

- Single Use Vapes consist of brittle plastic, a Lithium Ion Battery and a Nicotine reservoir.
- The WEEE regulations were laid in 2013, when vapes were in their infancy. This has led to vapes falling through the cracks, very few producers have designed them to be recyclable or offered takeback scheme as they are legally obliged to.
- The majority of WEEE is shredded when recycled to separate waste types, however the Lithium Ion battery present inside vapes is very volatile and is a fire risk when placed in the general waste stream. There has been a surge in waste fires related to vapes.
- In January 2024 government announced a disposable vapes ban to come in force as soon as possible – this is expected in 2025.
- 5 million single use vapes are thrown away every week, and there is still a large problem with illegal vapes. So a recycling collection will still be required for the foreseeable future.
- Many retailers are installing vape collection points as a matter of safety – further collection schemes will help the issue.



Single-use vapes sparking surge in fires at UK waste plants



The 1.3m disposable e-cigarettes discarded every week often end up in general waste and their broken batteries are highly flammable



Garden Waste Scheme

- 2024 subscription cost - £38
- 17 collections between March/April – November
- Fortnightly service
- Over 68,000 subscriptions
- Over 17,500 tonnes collected p.a.



Sign Up Today

Garden waste collections 2024

Collections from the kerbside between **April** and **November**.

Fees for 2024
Annual subscription £38

To sign up
For collections across County Durham
Go to www.durham.gov.uk/gardenwaste
Call 03000 260 000

Terms and conditions apply.

A brown garden waste bin with a brown lid is shown. The bin has a label that says 'Garden Waste Collections 2024'. The bin is surrounded by green leaves and grass, suggesting a garden setting.

Waste Treatment - Teesside Energy from Waste

Tees Valley Energy Recovery Facility Procurement (TVERF)

- Partnership procurement for a 450,000 tonne residual waste treatment facility generating nearly 50MW of electricity – or enough to power the equivalent of 60,000 average homes.
- Final tenders from 2 bidders received in March 2023 however the project was paused due to market uncertainty around grid connection.
- Final planning permissions for the 2 bidders respective proposals were granted July 2023.
- Grid connection offers secured with Northern Powergrid which has allowed the procurement process to re-commence. Revised final tenders now due late 2024 after which, a preferred tenderer will be appointed with the aim of achieving Financial Close in 2025.
- Approx 4 year period for construction, testing and commissioning – commercial operations expected to commence late 2029.
- Carbon Capture & Storage (CCS) – shortlisted but unsuccessful in the Government's Phase 2, Track 1 bidding process. Future funding rounds are expected and the opportunity can be considered again.
- A huge range of information on the project including FAQ's are available to the public on the website:

- <https://www.tverf.co.uk/>



Legislation Update: Collection & Packaging Reforms

Key government Objectives:

1. All plastic packaging to be recyclable, reusable or compostable by 2025;
 2. Work towards eliminating food waste to landfill by 2030;
 3. Eliminate avoidable plastic waste over the lifetime of 25YEP;
 4. Double resource productivity by 2050
 5. Eliminate avoidable waste of all kinds by 2050
 6. 65% recycling rate (MSW) Municipal solid waste by 2035
- The Collection and Packaging reforms are a set of three reforms which will transform waste management in England and the UK, driving us towards a circular economy and to achieving these targets. These reforms are **Simpler recycling** (England only), **Extended Producer Responsibility (EPR)** and a **Deposit Return Scheme (DRS)** for drinks containers.



Simpler Recycling (England Only)

- Simpler Recycling is a reform to the recycling system which means that people across England will be able to recycle the same materials, whether at home, work or school, putting an end to the confusion over what can and cannot be recycled in different parts of the country.
- All Local authorities will be required to collect Glass, Paper & Card, Metal, Plastic packaging (including films and flexibles from 2027), Food Waste and Garden Waste.
- The materials in scope must be collected from some businesses by 31st March 2025, and households from 31st March 2026.
- Residual collections to be carried out a minimum of fortnightly, and an exemption from TEEP waste legislation which will allow comingling of recycling collected.
- **What this means for County Durham:**
 - Free weekly food waste collections to all households
 - An expanded garden waste service – service to operate over 36 weeks between March – October inclusive
 - The potential to change the way we collect recycling from households



Extended Producer Responsibility (EPR)

- Local Authorities will be compensated by packaging producers for the costs of efficiently and effectively managing household packaging waste.
- A scheme administrator will calculate producer fees and local authority payments based on efficiency and effectiveness.
- Producers will start paying EPR fees in October 2025 for packaging placed on the market across 2024. Local Authorities expected to receive first payments towards the end of 2025.
- **What this means for County Durham:**
 - Income for managing packaging waste
 - DCC will be assessed on efficiency & effectiveness, potential that comingling could affect payments
 - EPR & Simpler Recycling will lead to clear OPRL “Recycle” or “Do Not Recycle” on packaging, hopefully reducing confusion and contamination.



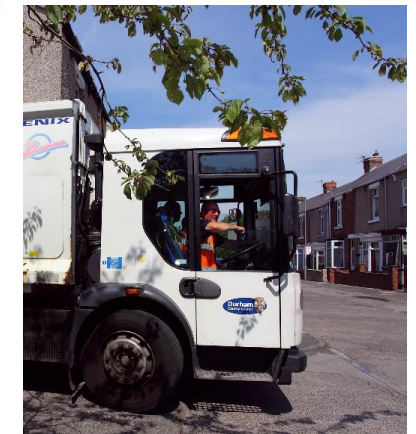
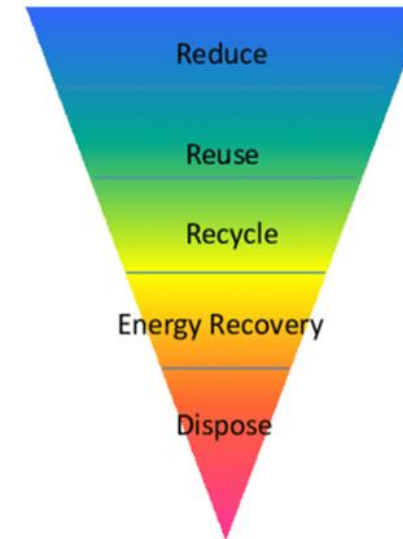
Deposit Return Scheme (DRS)

- DRS is a reform whereby a small deposit would be placed on single use drinks containers (excluding glass) from 150ml-3L
- These deposits can then be redeemed when the container is taken to a reverse vending machine (RVM), every store selling drinks containers will be expected to host a RVM.
- This will be managed by a Deposit Management Organisation (DMO) which will be appointed by DEFRA. The DMO will set the deposit level and a DRS logo. DEFRA is keen to ensure interoperability so a container purchased anywhere in the UK can be returned in any UK nation.
- DMO will be appointed in Spring 2025 and will be in charge of set up before a launch in October 2027.
- **What this means for County Durham:**
 - Trading Standards will have a large role in ensuring producers & retailers comply
 - County Durham's Dry Recycling waste stream could lose a proportion of drinks containers in 2027
 - Local authorities will have to engage with the DMO concerning the process of collecting unredeemed deposits from drinks containers placed in the recycling bin rather than taken to a RVM.



Now and the next decade

- Impacts of the Resources and Waste Strategy for England, 2018 and Simpler Recycling.
- Establish a viable circular economy.
- Manage waste in accordance with the waste hierarchy.
- Opportunity to shape the future waste management service offered to residents and further public engagement.
- Links to the Climate Emergency Response agenda ie. separating food waste for Anaerobic Digestion.
- Residual waste will always need a home – new TVERF to provide a secure route for treatment, diverting from landfill.
- New contracts for waste management service - Haulage & HWRC are now bedding in.
- Large scale Local Authority with a growing population – increasing demand on the service.





Any questions?